

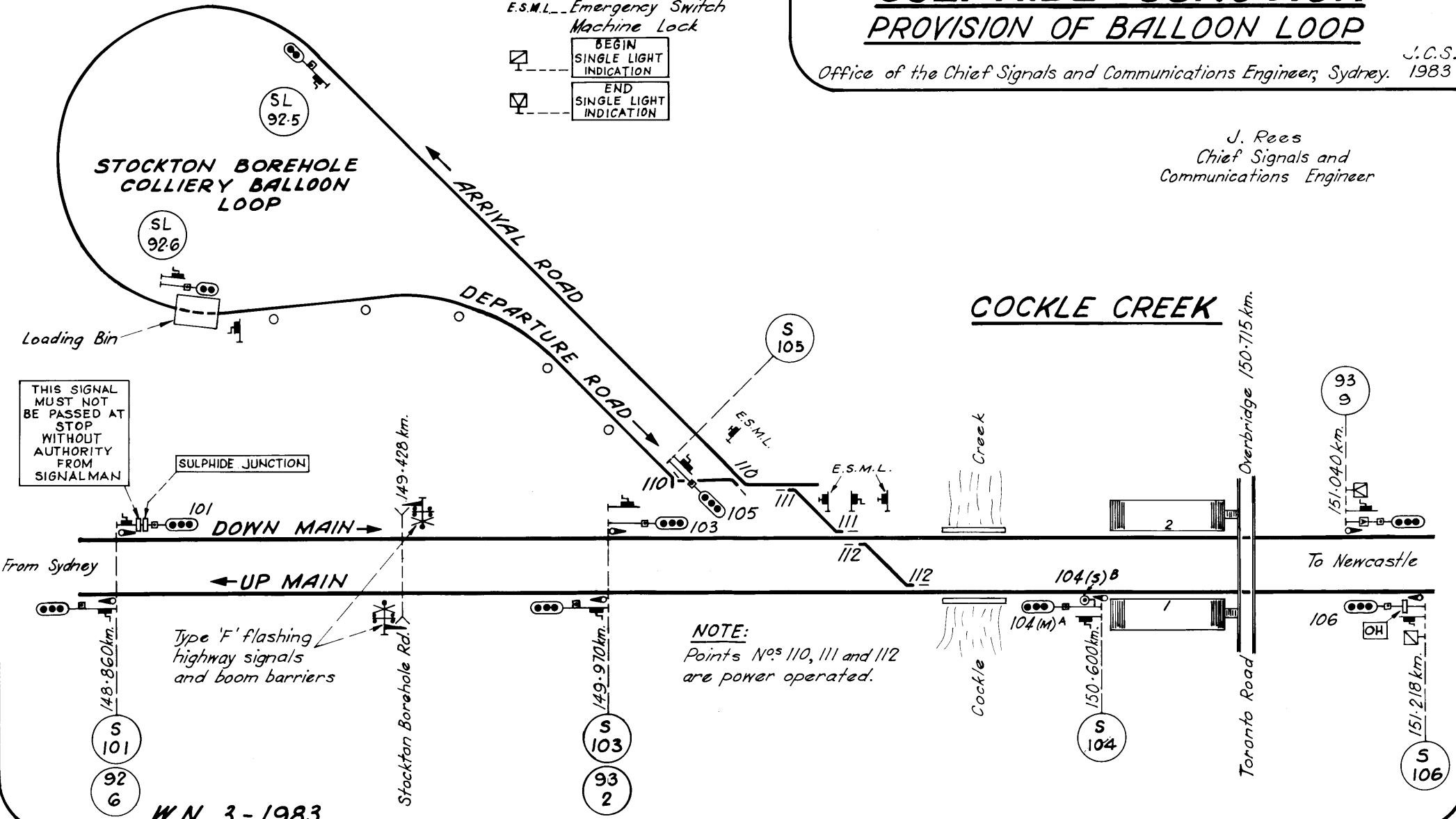
SULPHIDE JUNCTION PROVISION OF BALLOON LOOP

Office of the Chief Signals and Communications Engineer, Sydney. J.C.S. 1983

J. Rees
Chief Signals and
Communications Engineer

LEGEND:

- Loading signal (5 light)
- E.S.M.L.-----Emergency Switch
Machine Lock
- BEGIN
SINGLE LIGHT
INDICATION
- END
SINGLE LIGHT
INDICATION



THIS SIGNAL
MUST NOT
BE PASSED AT
STOP
WITHOUT
AUTHORITY
FROM
SIGNALMAN

NOTE:
Points Nos 110, 111 and 112
are power operated.